

## Pillow Case - standard size

$\frac{3}{4}$  yard fabric for pillow body

$\frac{1}{4}$  yard fabric for pillow cuff

2" strip for accent

Stack all fabrics on top of each other with folds and selvages lining up.

Trim selvage edges so all fabrics are equal width.

Take accent piece and press in half lengthwise wrong sides together.

Open pillow body fabric to a single layer right side up.

Place the accent piece on top of the right side of pillow body material, matching raw edges.

Add cuff piece right side down to the accent/pillow body, matching raw edges.

Sew or serge  $\frac{1}{4}$ ".

Open cuff out and press seam out toward cuff raw edge.

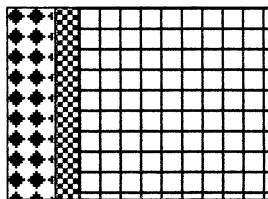
Fold pillow right sides together lengthwise.

Starting with the cuff edge, sew or serge the length of the pillow body and across the bottom (opposite end of cuff).

Serge or turn under the raw cuff edge and fold to the inside of the pillow covering the accent seam.

On outside of cuff, top stitch in place  $\frac{1}{8}$ " from accent seam.

Option: you could use a double needle for a decorative touch or sew under the accent fold to hide your stitch.



Enjoy!!